

# FORCE 1 LOGISTICS – AVAILABLE VEHICLES

## FOR LEASE

### M916 - 10 TON TRUCK (2012)



**LEASE FOR \$350.00/DAY**

#### FEATURES:

- Gross weight: 11.33 TONS
- Engine: Cummins NTC 400 diesel
- Fuel capacity: 81 gal
- Payload: 30,000lbs
- Automatic Allison push button transmission
- High and low range transfer case
- Fording Depth: 31in

### MK23 - 7 TON TRUCK (2001)



**LEASE FOR \$350.00/DAY**

#### FEATURES:

- Gross weight: 27,800lbs
- Engine: 11.9-liter, 6-cylinder CAT-12
- Fuel capacity: 81 gal
- HWY Payload: 30,000lbs
- Automatic Allison push button transmission
- Fording Depth: 60in

## FORCE 1 LOGISTICS – AVAILABLE VEHICLES

### M925A2 - 5 TON TRUCK W/FUEL CELL (1991)

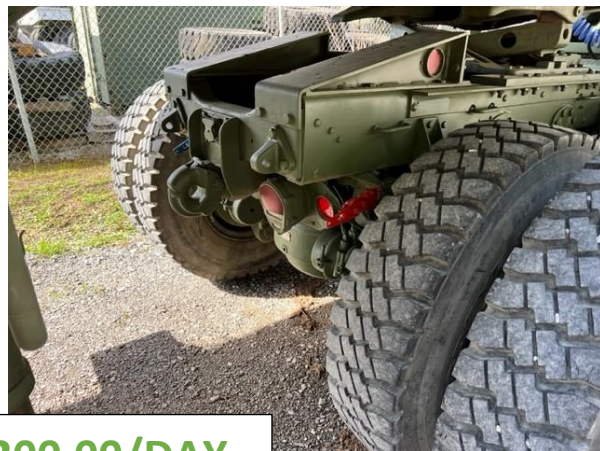


**LEASE FOR \$250.00/DAY**

#### FEATURES:

- Gross weight: 22,030lbs
- Engine size: Cummins NHC 250hp
- Fuel capacity: 81 gal
- Payload: 10,000lbs
- Towed load capacity (Pintle): 15,000lbs
- Run-flat tires
- Fording Depth: 78 in
- High and low range transfer case
- 20,000lb front mount hydraulic winch

### M932A1 - 5 TON TRUCK W/WINCH (2001)



**LEASE FOR \$200.00/DAY**

#### FEATURES:

- Gross weight: 20,995lbs
- Engine size: Cummins NHC 250hp
- Fuel capacity: Dual tanks (81gal)
- Towed load capacity: 37,500lbs
- Payload: 15,00lbs
- Ford Depth: 78 in
- 20,000lb front mount hydraulic winch
- Michelin 1600 Super Single Tire option (54")





## FORCE 1 LOGISTICS – AVAILABLE VEHICLES

### M35A3 - 2.5 TON DEUCE (1978)



**LEASE FOR \$200.00/DAY**

#### FEATURES:

- Gross weight: 13,000lbs
- Engine: Caterpillar 3116
- Transmission: Allison 1545 Automatic
- Fuel capacity: 81 gal
- Payload: 10,000lbs
- Towed load capacity (Pintle): 15,000lbs
- Run-flat tires
- High and low range transfer case
- Fording Depth: 30 in
- Green base paint w/ black accent

### M35A1 – 2.5 TON BOBBED DEUCE (1971)



**LEASE FOR \$150.00/DAY**

#### FEATURES:

- Gross weight: 12,880lbs
- Engine: REO OA-331 127hp
- Transmission: 5-spd Manual
- Fuel capacity: 81 gal
- Payload: 10,000lbs
- Towed load capacity (Pintle): 15,000lbs
- High and low range transfer case
- Run-flat tires
- Fording Depth: 30 in

## FORCE 1 LOGISTICS – AVAILABLE VEHICLES

### M35A1 – 2.5 TON DEUCE W/DUMP BED (1968)

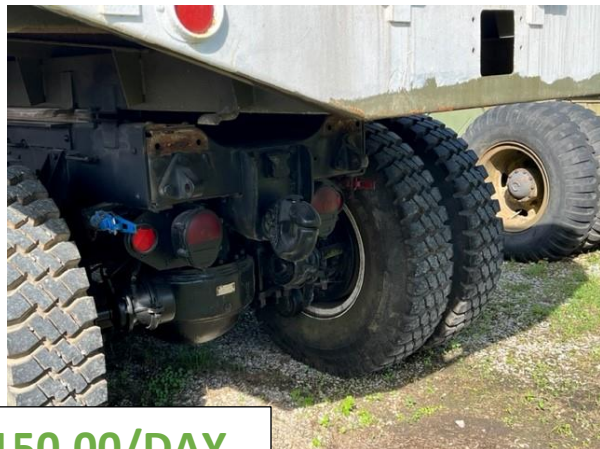


**LEASE FOR \$150.00/DAY**

#### FEATURES:

- Gross weight: 12,880lbs
- Engine: REO OA-331 127hp
- Transmission: 5-spd Manual
- Fuel capacity: 81 gal
- Payload: 10,000lbs
- Towed load capacity (Pintle): 15,000lbs
- High and low range transfer case
- Fording Depth: 30 in

### M932A1 - 5 TON (1984)



**LEASE FOR \$150.00/DAY**

#### FEATURES:

- Gross weight: 22,242lbs
- Engine: Cummins NHC 250hp
- Fuel capacity: 81 gal
- Payload: 15,000lbs
- High and low range transfer case
- Fording Depth: 30 in



## FORCE 1 LOGISTICS – AVAILABLE VEHICLES

**FOR SALE**

### HOLDEN - HCD10 CONVERTER DOLLY TRAILER (2008)



**\$3500**

#### FEATURES:

- Curb weight: 3080lbs
- Payload Maximum: 18,000lbs
- Air Brake System
- Michelin 1600 Super Single tire option (54")

**FOR SALE**

### M1082 LMTV 2.5 TON CARGO TRAILER (2004)



**\$3500**

#### FEATURES:

- Gross weight: 6510lbs
- Payload: 5,000lbs
- Super Single Tires
- Air Brake System



## FORCE 1 LOGISTICS – AVAILABLE VEHICLES

**FOR SALE**

### M52 - MULTI-FUEL 5 TON (1970)



**\$7500.00**

#### FEATURES:

- Gross weight: 18,200lbs
- Engine: LDS-465 White 180 H.P.
- Transmission: 5-Spd Manual
- Fuel capacity: 110 gal
- High and low range transfer case
- HWY Payload: 25,000lbs
- Towed Load: 55,000lbs

**FOR SALE**

### M52 – INTERNATIONAL MACK 5 TON (1953)



**\$4500.00**

#### FEATURES:

- Gross weight: 18,200lbs
- Engine: ENDT-673 Mack 220 H.P.
- Transmission: 5-Spd Manual
- Fuel capacity: 110 gal
- Towed Load: 55,000lbs
- HWY Payload: 25,000lbs
- High and low range transfer case
- Rear PTO Winch (20,000lbs)

## FORCE 1 LOGISTICS – AVAILABLE VEHICLES

**FOR SALE**

### M200A1 DOLLY TRAILER (1981)



**\$2000**

#### FEATURES:

- Gross weight: 2400lbs
- HWY Payload: 7600lbs
- Cross Country Payload: 5000lbs
- Michelin 1600 Super Single tire option (54")